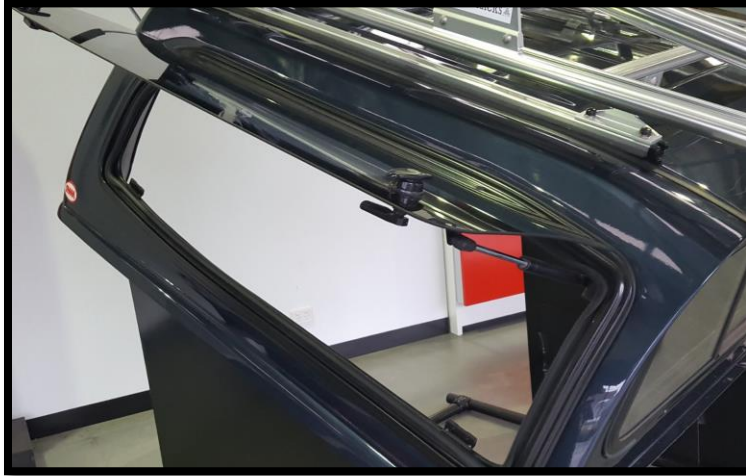


To replace the side lift up window glass in SMM V2 Steel Hardtop:

1. Open the side window.



2. From the gas strut holder remove the clip using flat screw driver. Repeat on both gas struts.



3. Take the gas struts off by gently moving them away from the ball. Repeat on other side.



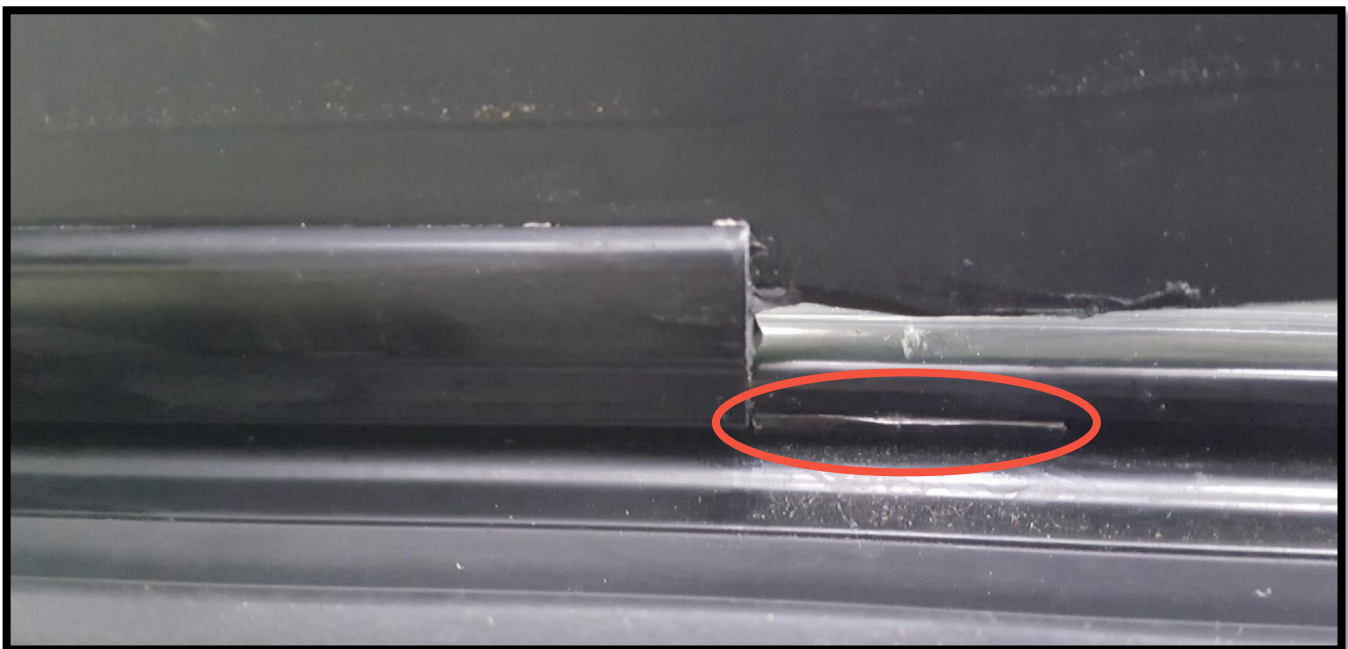
4. Lift the glass up to detach the hinge from the frame, take the glass off.





5. Replace the glass and refit it in reverse order:

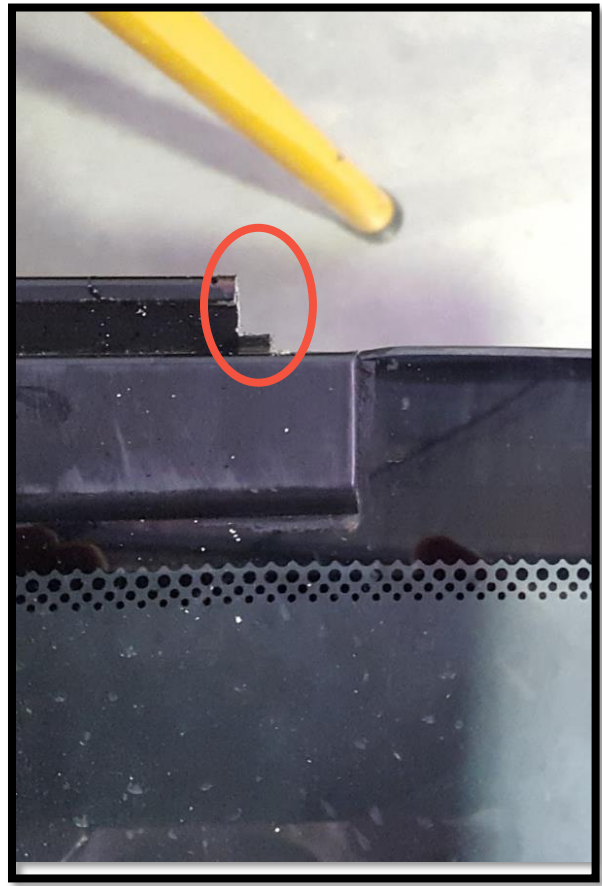
- a. lift the glass up.
- b. attach to the frame by putting the glass hinge between rubber stoppers in the frame (marked below),
- c. attach gas struts,
- d. fit the clips.



Side Lift Up Window Glass Replacement (V2)



Warning: The hinge on the new glass may have moved a few millimeters and doesn't allow it to fit the new glass frame. In this case, check and mark the glass hinge position against the rubber stoppers which are in the frame. Using a saw, cut the hinge to be able attach it to the frame and fit the hinge between rubber stoppers.



6. Replace the locks if necessary to have the same key for all of locks in the hardtop. Remove the allen head screws and a nut. Replace the lock. Repeat in the reverse order for both locks.

