

## Rear Door Handle Fix Kit (V2)

### Problem:

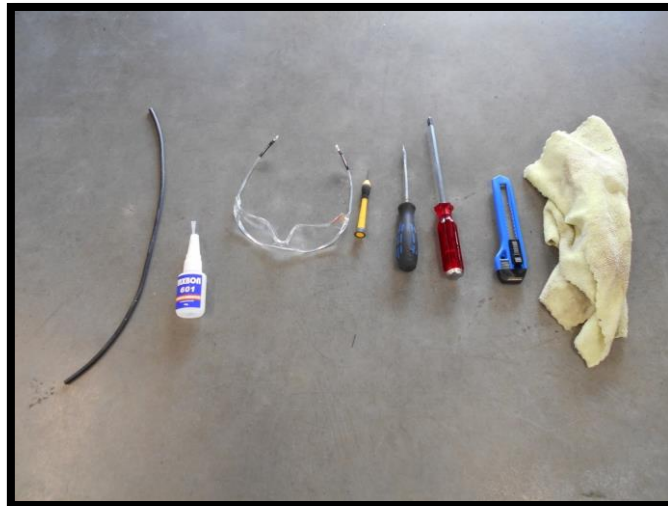
The water enters into the rear door through the gap between the plastic seal of the handle and the door in SMM V2 Steel Hardtop.

### Solution:

Replace the plastic seal with rubber seal.

### What will you need:

- SMM Sammitr Kit containing - Rubber seal and glue
- Protective glasses
- Phillips and flat head Screwdrivers
- Stanley Knife or scissors
- Clean cloth



1. Remove the plastic covers from handle by gently using flat head screwdriver, remove handle by unscrewing 2 screws using Phillips head screwdriver (as pictured)



# Rear Door Handle Fix Kit (V2)

2. Remove handle (as pictured)



3. Remove the cover by unscrewing 4 screws using Phillips head screwdriver (as pictured)

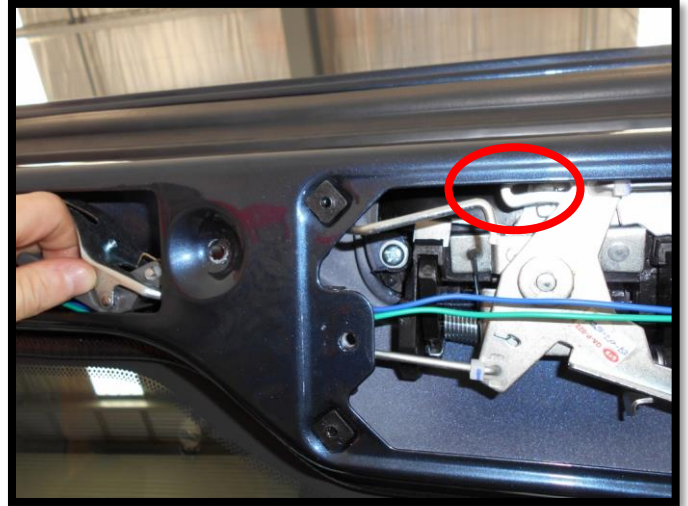
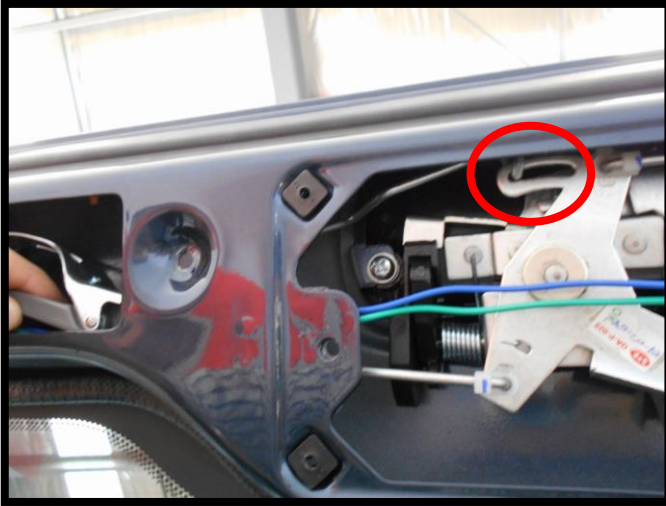


4. Remove internal handle by removing 2 screws using Phillips head screwdriver (as pictured)

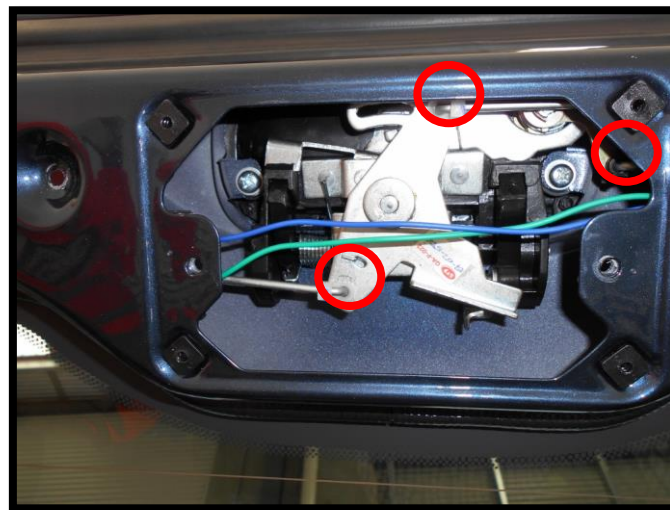


## Rear Door Handle Fix Kit (V2)

5. Turn the lock to the right and release the rod from its holder (as pictured)



6. Release rods of the lock and central locking (as pictured)

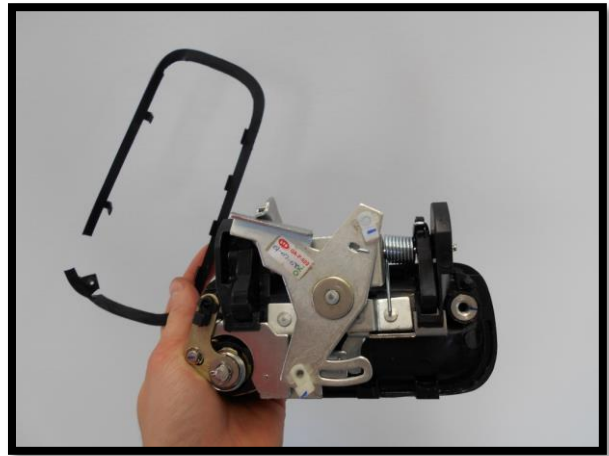
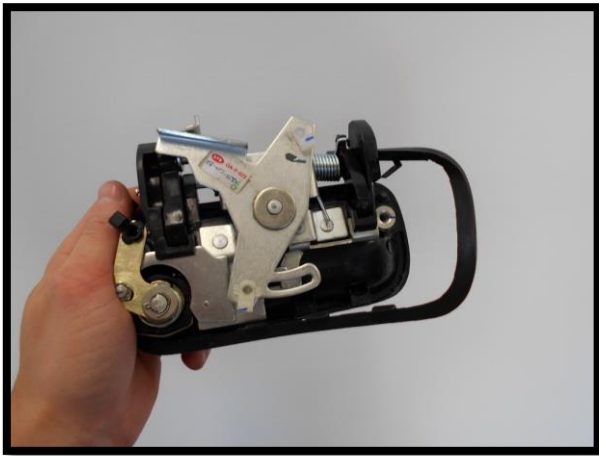


7. Remove the handle by gently pulling it out (as pictured)



## Rear Door Handle Fix Kit (V2)

8. Remove the plastic seal from handle (as pictured)



9. Clean the area around the door handle and behind (as pictured) using a clean dry cloth and a non abrasive, non corrosive or harsh chemicals.

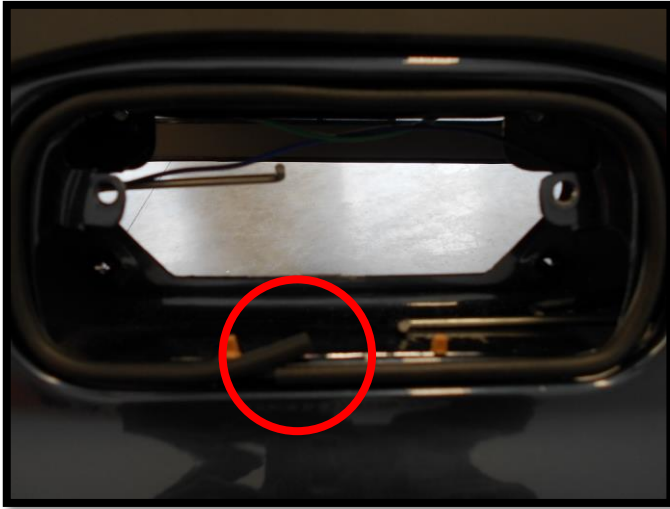


10. Apply the glue to a clean and dry surface on the edge of the handle hole (as pictured) take care not to spill or drip the glue.



## Rear Door Handle Fix Kit (V2)

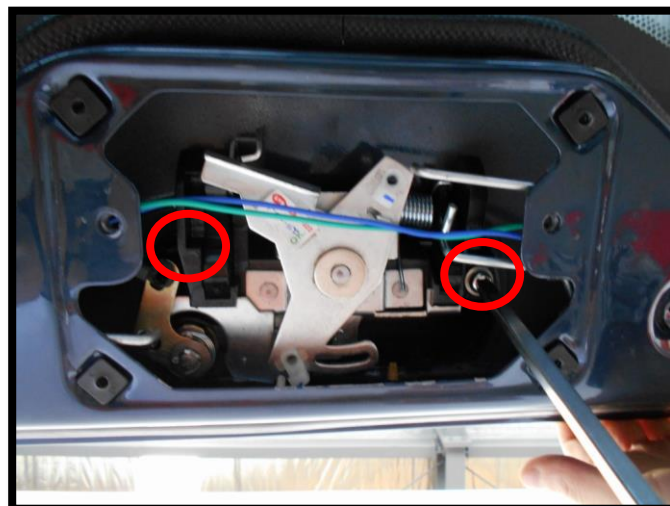
11. Install rubber seal (as pictured) trim the excess rubber carefully using the Stanley knife or scissors.



12. Replace the handle (as pictured)

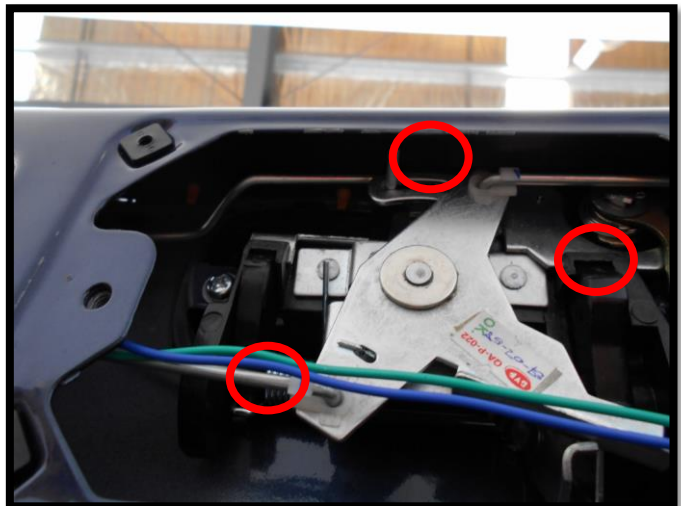
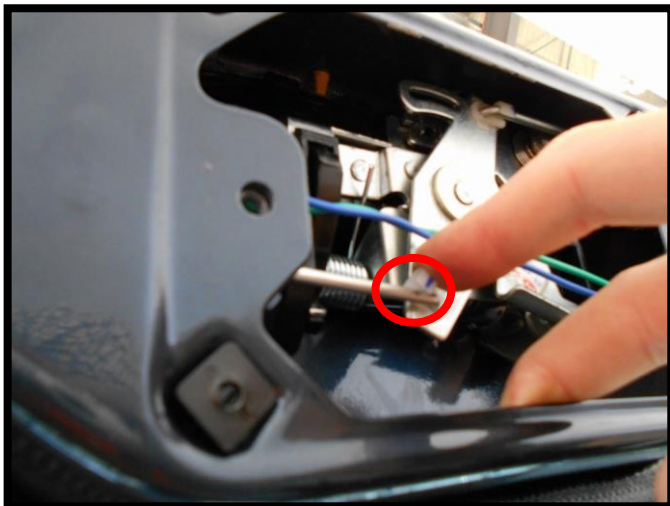
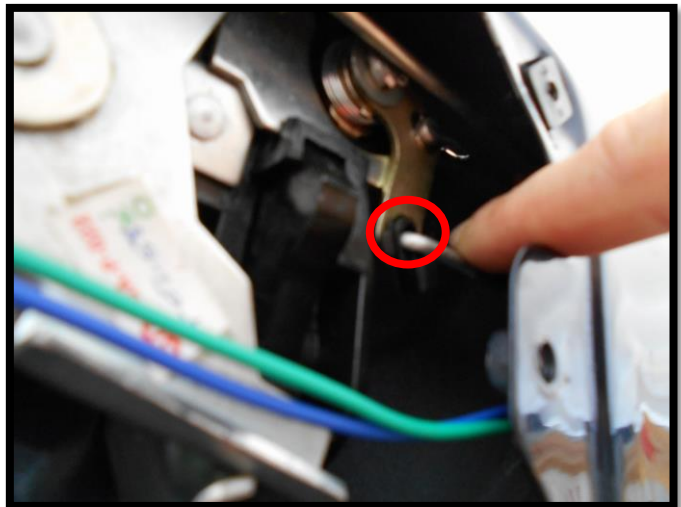
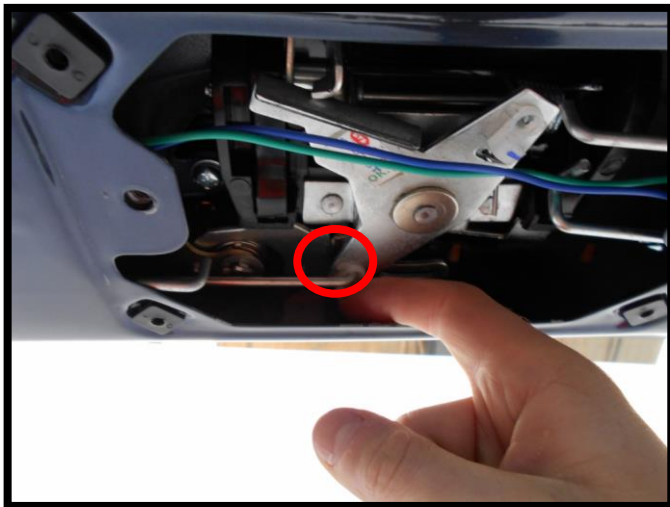


13. Replace and tighten the 2 screws using a Phillips head screwdriver to secure the handle (as pictured)

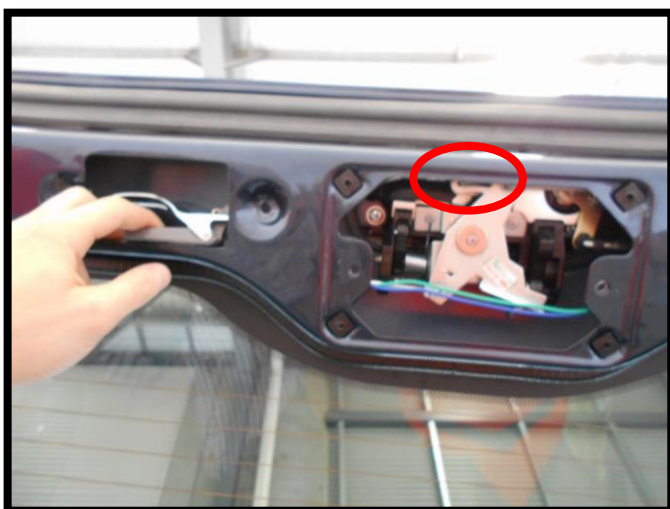


# Rear Door Handle Fix Kit (V2)

14. Mount the lock and central locking rods back into their position (as pictured)



15. Replace the back internal holder (as pictured)



## Rear Door Handle Fix Kit (V2)

16. Tighten the 3 screws using a Phillips head screwdriver, replacing the internal handle (as pictured)



17. Replace the coverplate, tightening the 4 screws using a Phillips head screwdriver (as pictured)



## Rear Door Handle Fix Kit (V2)

18. Repalce the handle with 2 screws using a Phillips head screwdriver (as pictured)



Your rear door handle is now watertight.