

Lift-Up to Lift-Up side window replacement (V2)



To replace the side lift-up window to lift-up window in SMM V2 Steel Hardtop:

1. Cover the roof of the hardtop to avoid any damages and open the window



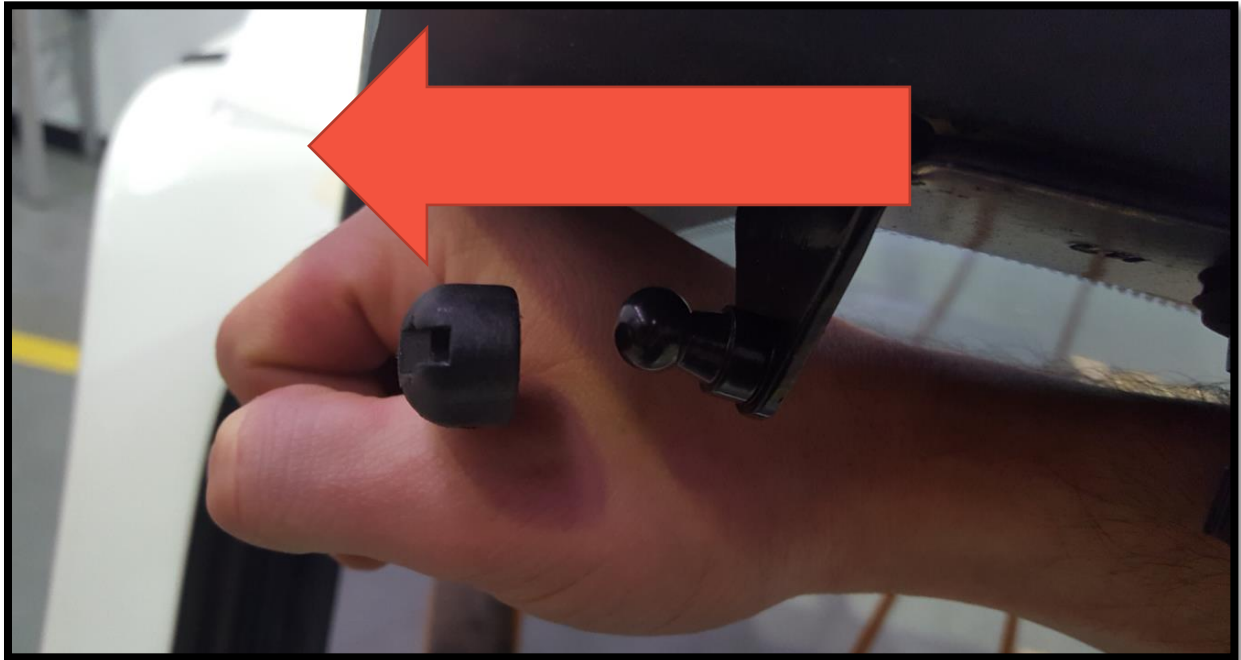
2. Using a flat screw driver, remove the clip from the gas strut head. Repeat on both sides.



Lift-Up to Lift-Up side window replacement (V2)



3. Take the gas strut out of the ball by pushing it to the side.



4. Lift the window up and detach from the hinge.



Lift-Up to Lift-Up side window replacement (V2)



5. Remove internal rubber from the frame.



Lift-Up to Lift-Up side window replacement (V2)



6. On the hardtop, by using masking tape, mark the positions of 10 screws.



Lift-Up to Lift-Up side window replacement (V2)

7. Unscrew 10 screws from the frame and remove the old frame by pulling it gently.



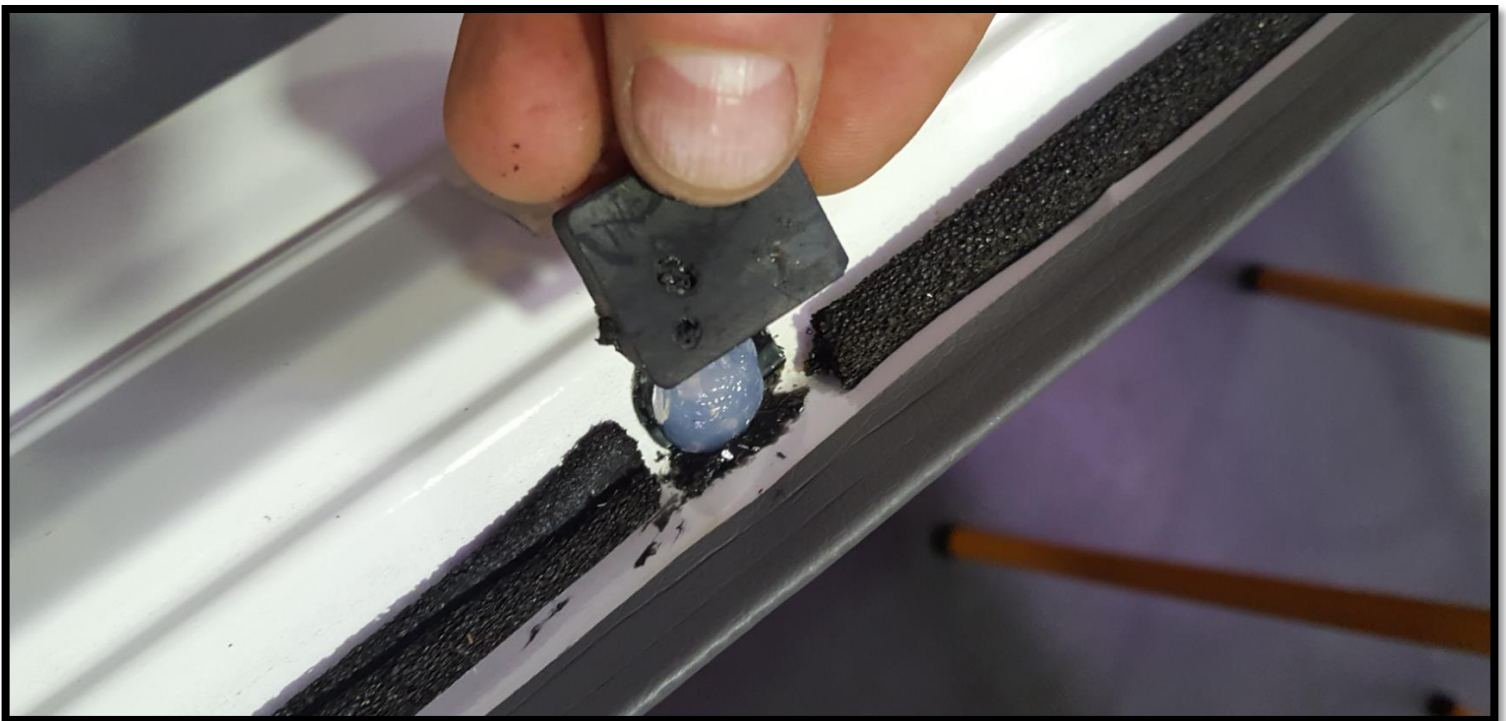
Lift-Up to Lift-Up side window replacement (V2)



8. Clean the frame to remove any dust.



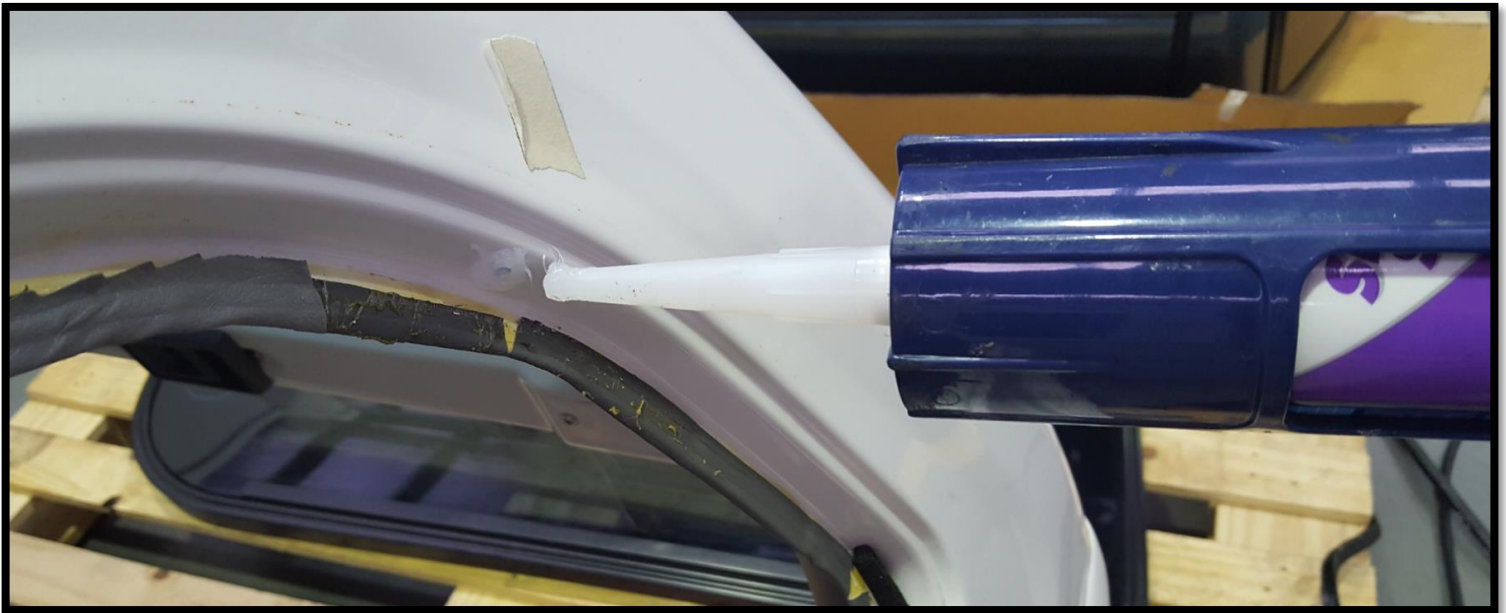
9. Refit bottom rubber.



Lift-Up to Lift-Up side window replacement (V2)



10. Seal the old holes.



Lift-Up to Lift-Up side window replacement (V2)



11. Prepare the new frame by removing the glass from the frame (Repeat steps 2-4).



12. Fit the seal around the frame using masking tape on both ends to keep it in position during stretching.



Lift-Up to Lift-Up side window replacement (V2)



Lift-Up to Lift-Up side window replacement (V2)

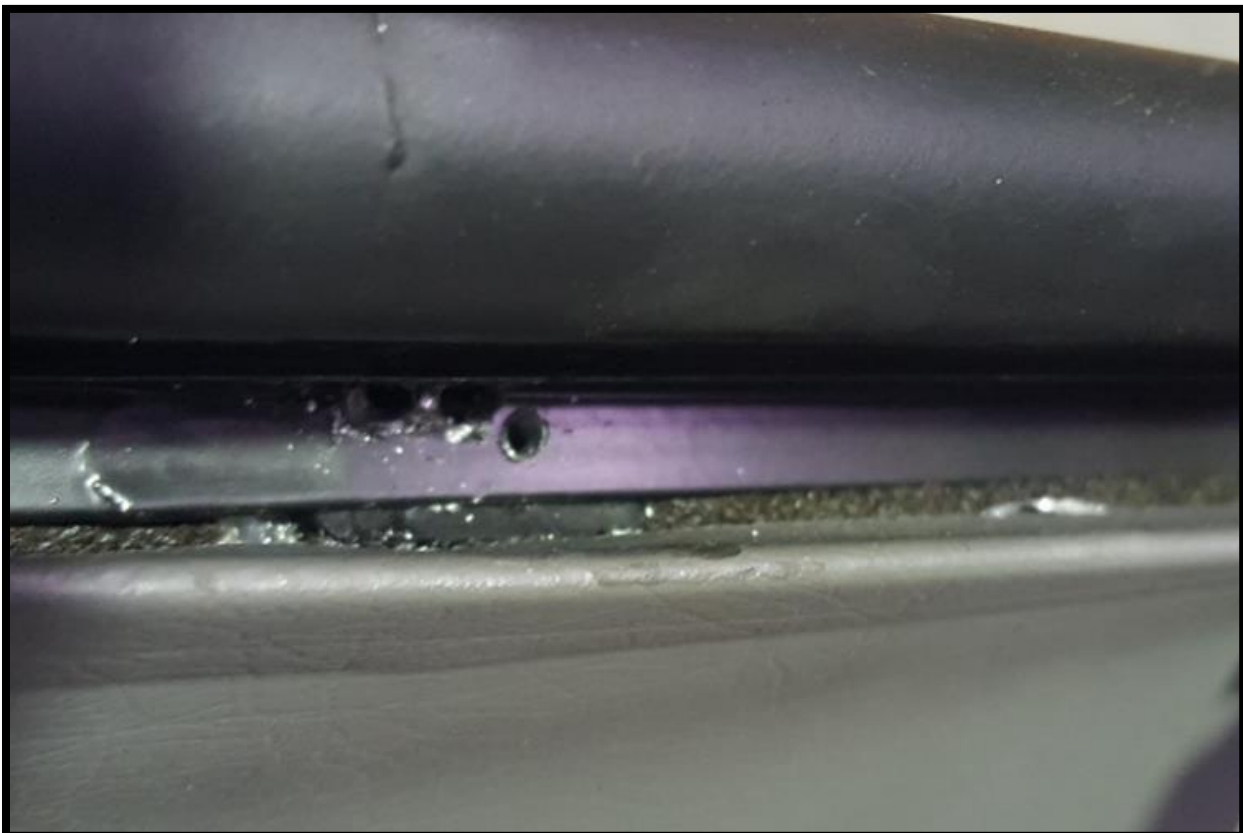
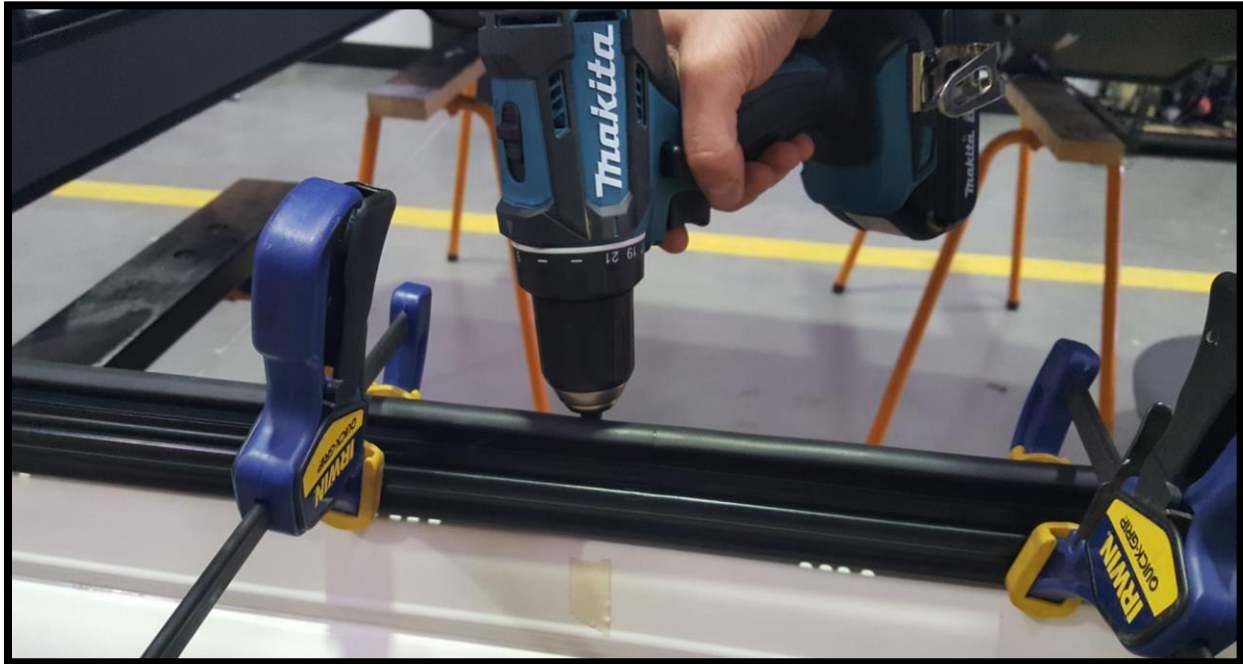


13. Fit the new frame to the hardtop and ensure that the distance is the same on both sides. Use two clamps to hold the frame in place.



Lift-Up to Lift-Up side window replacement (V2)

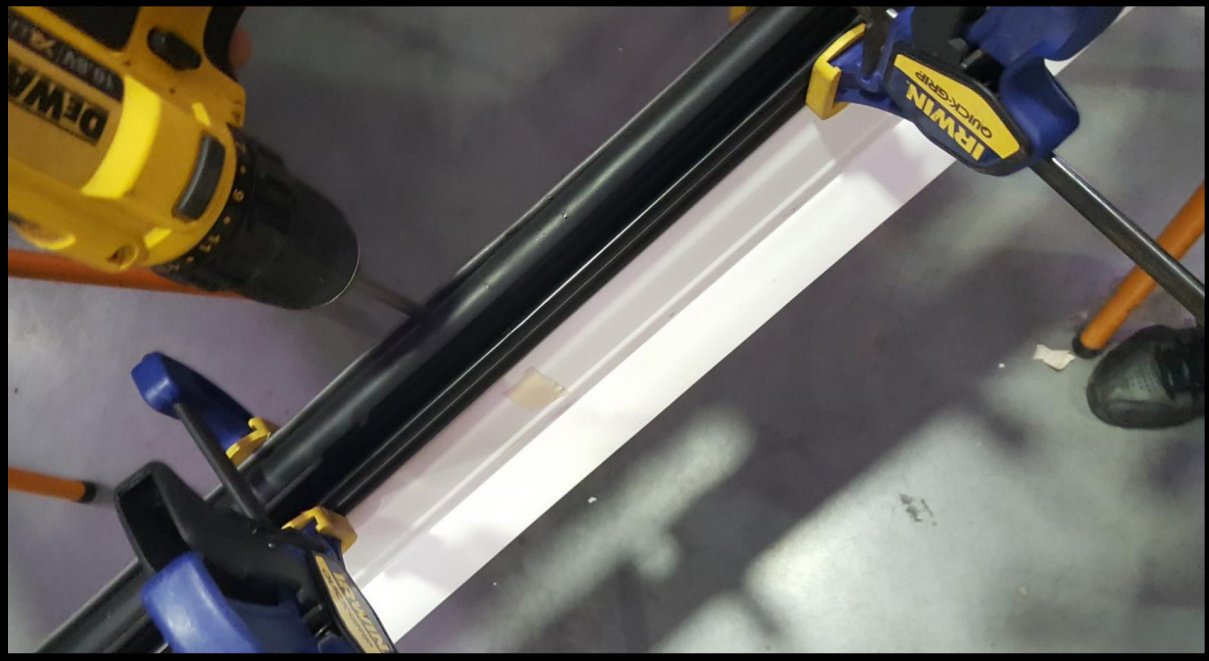
14. Drill the first hole between clamps – above the mark



Lift-Up to Lift-Up side window replacement (V2)



15. Screw the frame to the hardtop using a cordless drill. To ensure you do not overtighten the screw, set the right torque on the cordless drill.

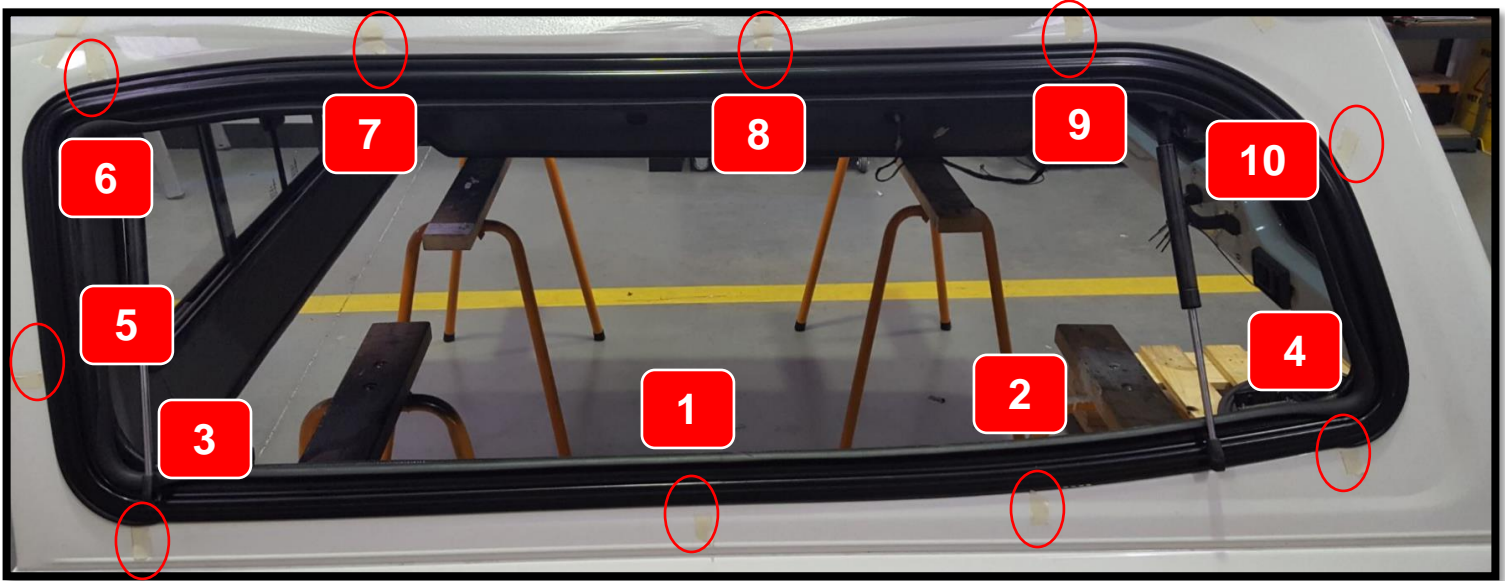


WARNING: Picture above is only an example. Please set the right Torque setting for your cordless drill.

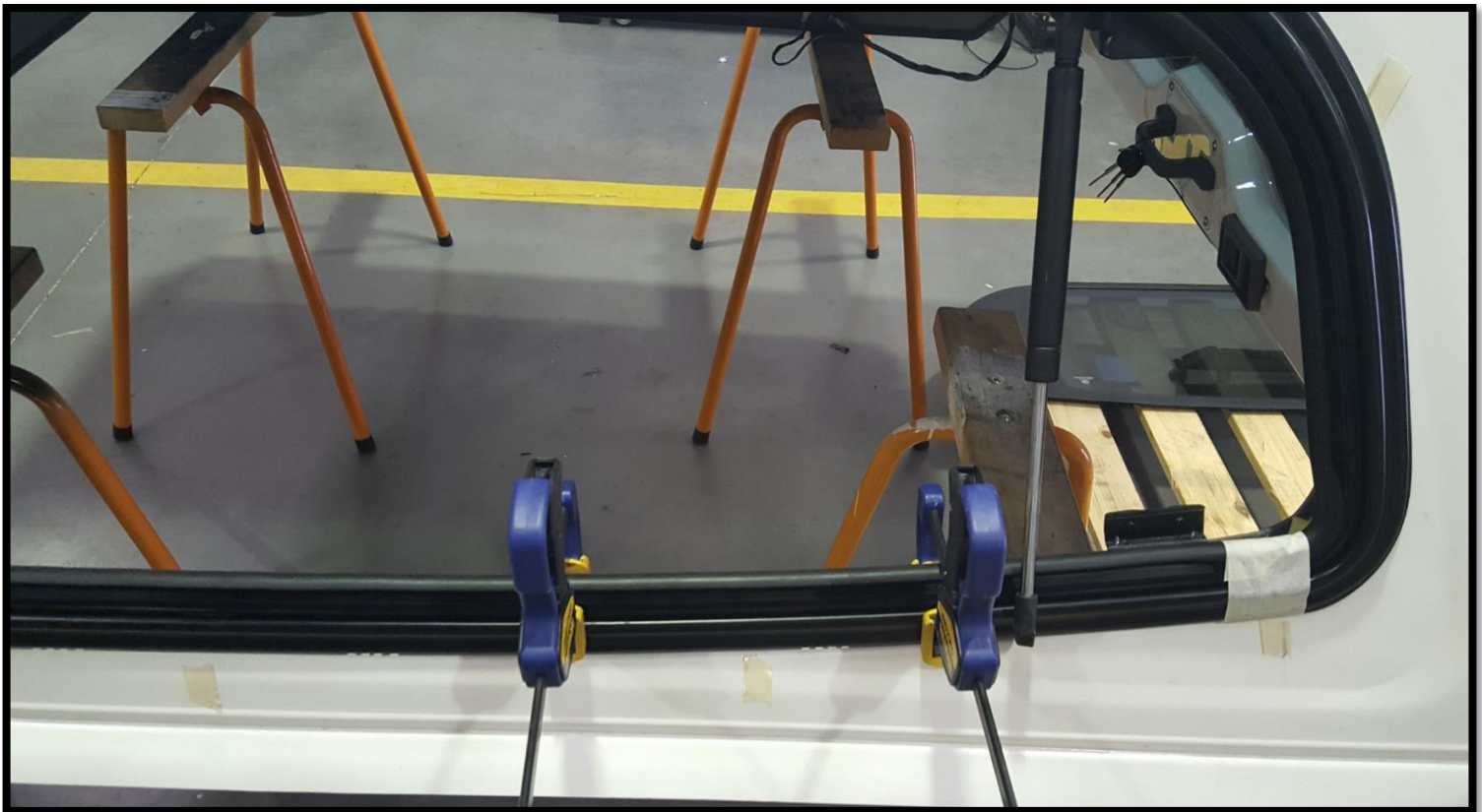
Lift-Up to Lift-Up side window replacement (V2)



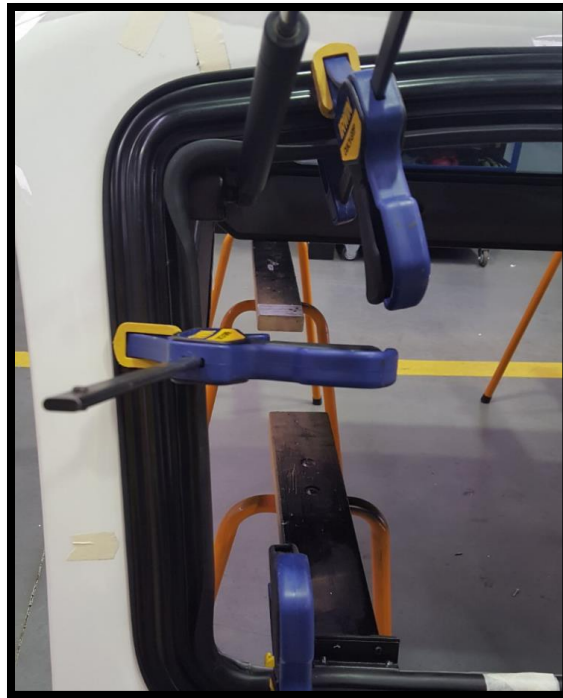
16. Repeat for the next 9 screws in the order marked below.



17. Some examples on how to use clamps to drill other holes.



Lift-Up to Lift-Up side window replacement (V2)



Lift-Up to Lift-Up side window replacement (V2)



Lift-Up to Lift-Up side window replacement (V2)

18. Remove masking tape from the frame.



19. Fit the glass and gas struts in reverse order.



Lift-Up to Lift-Up side window replacement (V2)



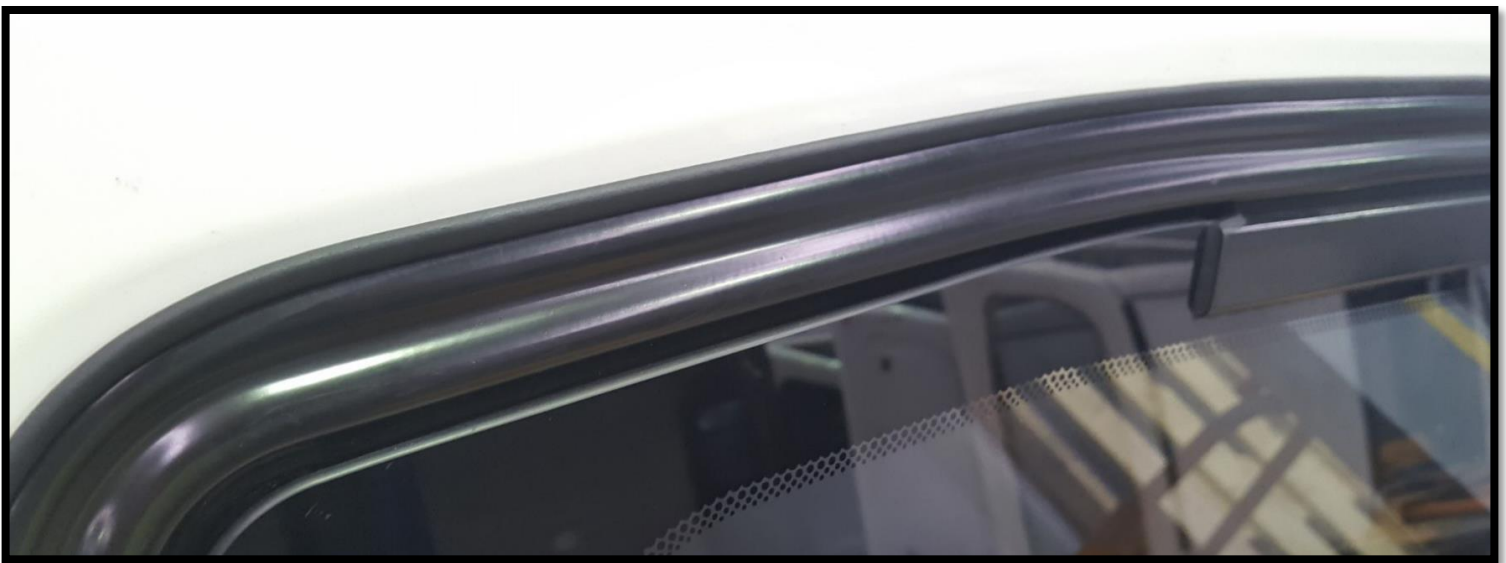
20. Install internal rubber



Lift-Up to Lift-Up side window replacement (V2)



21. Double check the job quality. The seal should be flat around the whole frame and has similar size being approximately 5mm.



Lift-Up to Lift-Up side window replacement (V2)



22. When the job is done, ensure that window doesn't leak. Prepare the water test and check the hardtop from inside.



WARNING: Do not use a high pressure hose directly on the windows.

Lift-Up to Lift-Up side window replacement (V2)



23. Replace the locks if necessary to have the same key for all of locks in the hardtop. Remove the allen head screws and a nut. Replace the lock. Repeat in the reverse order for both locks.

