

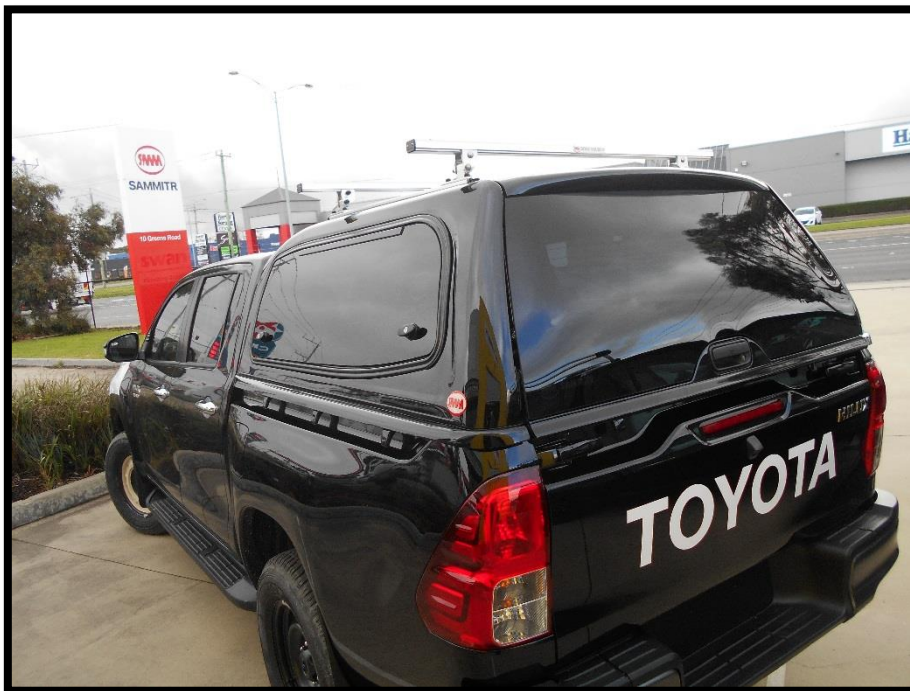


WIRING INSTRUCTIONS

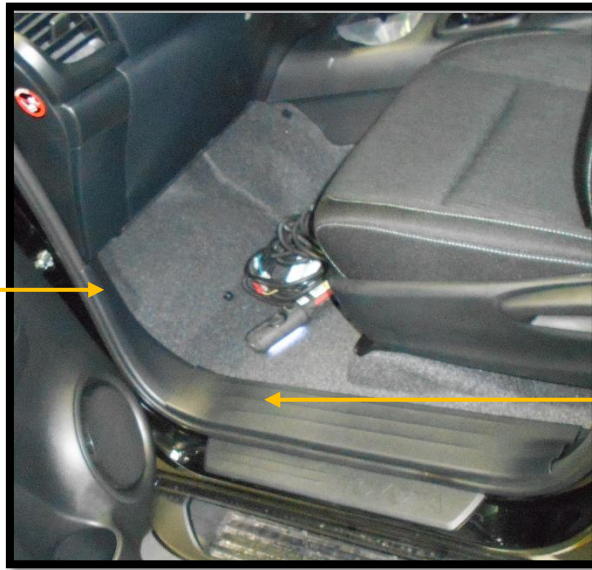
SMM Steel Hardtop V2

TOYOTA HILUX

2016+

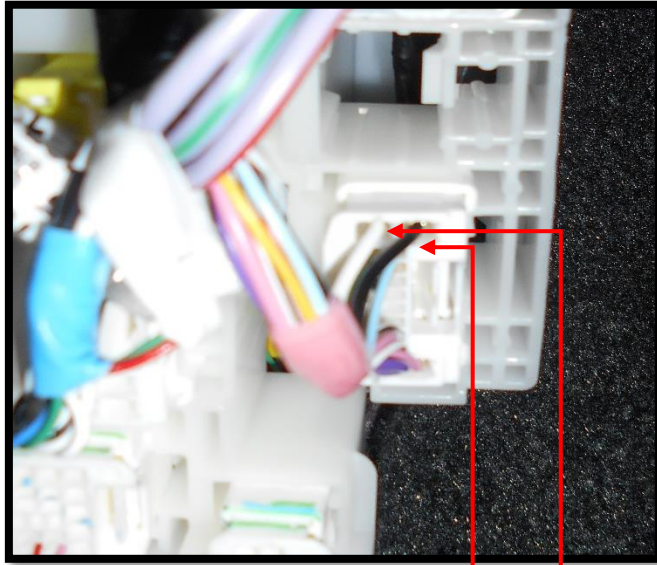


| FUNCTION | HARDTOP WIRING | VEHICLE WIRING |
|----------------------------|----------------|---------------------|
| Constant Power(Dome Light) | Red | Blue |
| Rear Demister | Yellow/Red | Black |
| Central Locking(Lock) | Blue | Black (Plug A) |
| Central Locking(Unlock) | Green | White (Plug A) |
| Earth | Black | White/Black |
| Brake Light | Red | Blue (Plug B) |
| Earth | Black | White/Black(Plug B) |



- Plug A is located at the front of the vehicle on the passenger side behind the kick panel.
- Plug B is located behind the tail light on the driver's side.
- The rest of the connections are under the underneath the floor kick panel.

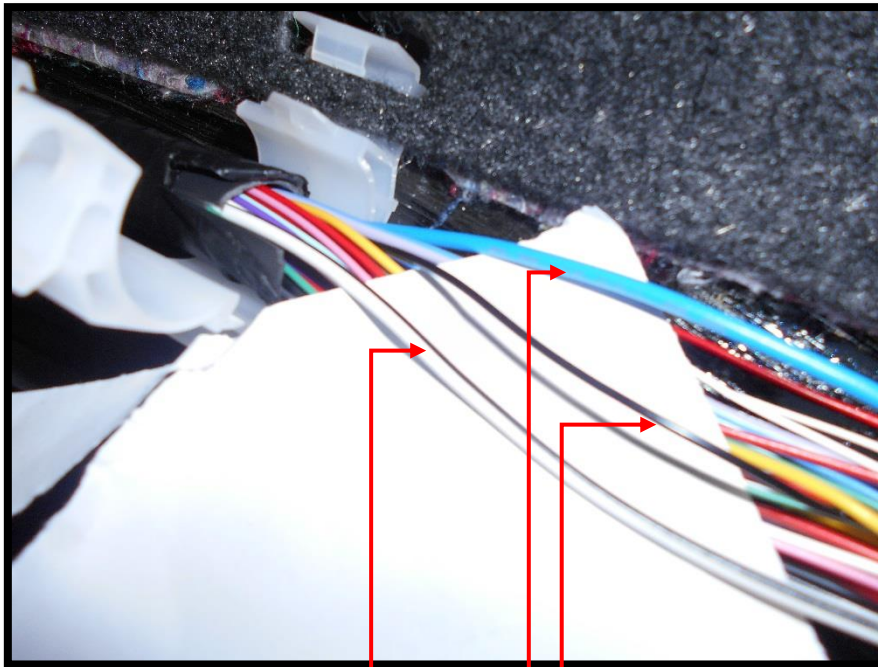
Plug A.



Blue to Black (Central Locking- Lock)

Green to White (Central Locking- Unlock)

Connections under floor kick panel.

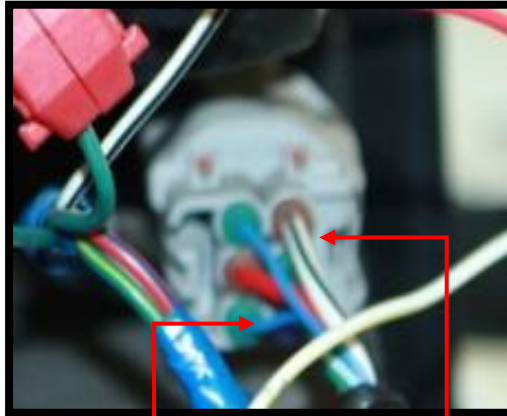


Black to White/Black (Earth)

Red to Blue (Constant Power-Dome light)

Yellow/Red to Black (Rear Demister)

Plug B



Red to Blue (Brake Light)

Black (Earth) to White/Black

Running the loom.

- You will find an opening with a grommet sealing it under the passenger seat to run the loom out under the vehicle. Then run the loom to the rear of the vehicle behind the tail light.



PLEASE NOTE

- Avoid drilling holes in the vehicle. There are always openings into the cabin underneath the vehicle or at the rear.
- On the SR model you will need to drill a 5/8 hole at the rear of the tub behind the tail light to run the wires from the hardtop for connection. Be sure to put a grommet in the hole so there will be no damage to the wires.
- Using a L.E.D test light, test all electrical components of the vehicle before and after wiring the hardtop to ensure that everything works correctly.
- Ensure you replace all vehicle trim and return the vehicle interior back to how it was found.